

Neuro IPM Release Notes

Release Date: 08/11/2023

Version: 2.7.0

Included in the release:

New Development:

1. Feature: Recalibrate workflow
2. Force landscape mode
3. UI-updated styling to non task video screens.
4. Backend changes for building the project & caching.

Issues/Bug Fixes: None

1. Recalibrate workflow

Details:

Users will be required to complete the “Setup Steps” (recalibration) if:

- A change in browser has been detected. For example, the user started a workflow with Chrome and switched to Firefox.
- An hour of time has elapsed since the “Setup Steps” (step 3 below) have been completed.

When the recalibrate workflow is triggered the users will be required to complete steps:

Step 2: Setup Requirements (Hardware/Environmental Requirements)

Step 3: Start Setup (calibration)

Step 4: Finish Setup (smooth yellow dot video)

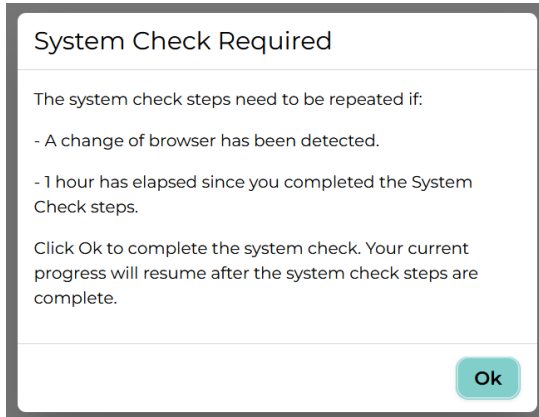
Step 5: Sample Video (performance measure example)

Step 6: Preparing your child (Your Child’s Experience-informative video)

Step 7: Your Child’s Turn (video preview/headbox)

Step 8: Child Setup (child video with moving objects)

When recalibration has been triggered the users will be provided with an onscreen prompt.



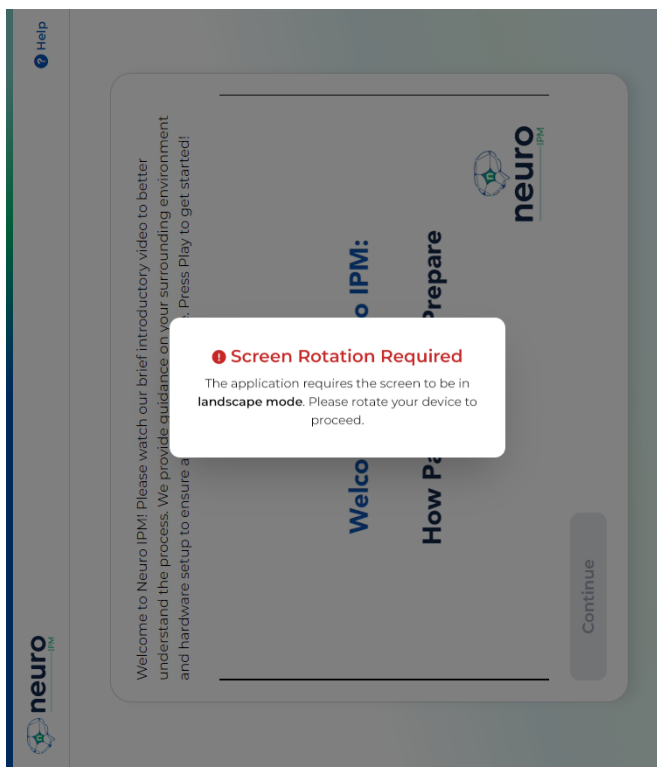
If the user has started the paradigm task videos, and recalibration is triggered, after completing the Setup Steps again, their last incomplete paradigm task video will load. For example, if the user has completed task videos through Receptive Vocabulary 2, and recalibration is triggered, Receptive Vocabulary 3 will load once recalibration is complete.

2. Force landscape mode on tablets

Details:

To ensure the correct screen orientation on tablets, landscape mode is being forced in the browser. If a tablet is in portrait mode the screen will rotate to landscape mode orientation.

While the device is in portrait mode, the user will be presented with a warning. After the device is rotated to landscape mode the error will be removed without action from the user.



3. UI-Updated styling to non task video screens

Details:

UI elements are refined during pre-step instructions and step completion confirmation messages. The instruction's text is unchanged.

